



**OMTECH ELECTRICALS
SOLUTIONS PVT. LTD.**

www.oesplindia.com



COMPANY PROFILE

**AN ISO 9001 : 2015
CERTIFIED COMPANY**



"To achieve Excellence through Ethical Practise"

To become a respected organisation in the field of MEP projects by providing transparent & innovative solutions where our Client also enjoy working with us and make it a rewarding experience for both of us.



"Reliability through Proficiency"

We take pride in being a company that grows through successful projects delivered and client referrals, we see the partnerships with our clients as investing in our future.

To maintain the continued patronage of our clients, we:

- Deliver on our promises
- Provide quality customer service and advice
- Guarantee safe, consistent, economical, environmentally-sustainable technical solutions.

Capgemini – GAR, Hyderabad.

8 Lakhs Sq.ft. Area with sector capacity of 8000 workstations completed at Hyderabad , GAR .



**OMTECH ELECTRICALS
SOLUTIONS PVT. LTD.**



"Work with Integrity And Ethics"

- In all our relationship, we will be transparent , reliable and responsible.
- Understanding the value of customer service we always be ready to prompt response with value engineering solution to maximise business of our clients.
- Technology driven solution to get excellence in the final result with new innovation
- **S**peed - Prompt response to customer for any solution & Service
- **P**assion - Passionate with our creation.
- **I**ntegrity -Ethical practice in all transaction to be trusted partner with our client
- **R**espect -Treat all stake holders with honour and dignity.
- **I**nnovation & Collaboration - Experiment Innovation with our technical partner & make a technical collaboration to gain high quality solutions with new idea in the market through latest updated technology.
- **T**eam - Deliver high quality and excellence in execution through our team and coordination approach with our other project agency

95% of our Clientele

has been with us since years and they have ***repeated with us*** for their new projects and much of our business comes from recommendation, which we think speaks it self our relationship with our customers.



**Guwahati International
Airport**



**OMTECH ELECTRICALS
SOLUTIONS PVT. LTD.**

Who We are...

We are a leading Turnkey MEP Services – Design & Build Contracting Company offering a diversified infra solutions for Electrical, Data Networking , HVAC, Fire Alarm, CCTV, Access control, PA system, Sprinkler and Plumbing services for various sectors like IT companies, Banking & Financial sector, Manufacturing Industries, Data-Centers, Educational Institutions, Healthcare, Hospitality, High-end residential, Entertainment and infrastructure projects with End to End Solutions from planning, design, installation, testing, commissioning and maintenance .



**OMTECH ELECTRICALS
SOLUTIONS PVT. LTD.**

Our Capabilities

We have expertise & capabilities to execute projects on pan India level. Over the years, we have successfully executed a number of prestigious projects across India . One of the first major project that we have completed was the Interior Electrification of Capgemini Technology Services India Limited , which was our single largest project of 8 lakhs sq.ft. with a seating capacity of 8000 employees, Subsequently we have successfully executed a number of prestigious projects like Piramal group, Wipro, Tata Technology, Bitwise, Geometric, Rajasthan State Data Center, Bank of India Data Centre, Rolls Royce Motors, Accenture, Dell, Microsoft, Axis Bank, L&T, NSE, Allianz, ICICI Bank, Hexaware, Mahindra & Mahindra , Barclays Finance, Cinepollis, Inox, Congnizant, Emerson, IKS, Citius Healthcare etc. We have worked for well known International PMCs like JLL, CBRE, C&W & Colliers.

Our execution capabilities have grown significantly with time, both in terms of the size of projects that we bid for and execute, and the number of projects that we execute simultaneously. Since our incorporation in November 2006, we have executed over more than 200 projects. Our Managing Director Mr. Akashkumar G. Patel, has been associated with this business for over 20 years and has been instrumental in the growth of our Company.

We have our in house manufacturing unit for Electrical Panel (CPRI Approved) and cable tray , trunking and Junction box .



Capgemini – DTP, Bangalore.

8.2 Lakhs Sq.ft. Area with 8500 workstations
capacity completed in a single order value .



World Biggest Temple ISKCON, Mayapur.

We have been awarded prestigious
project of ISKCON at Mayapur , Kolkata .

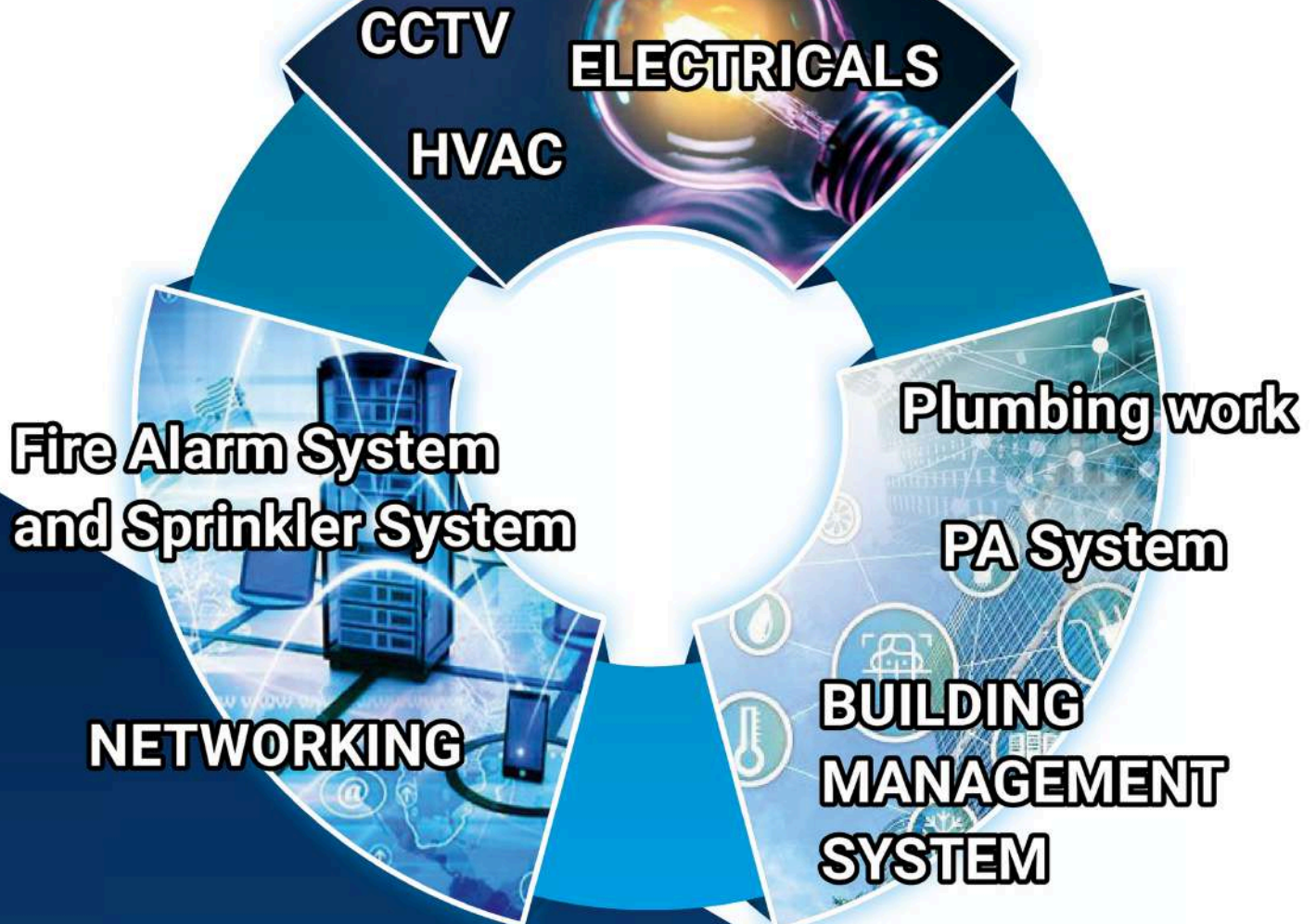


High rise residential building
of Piramal aranya
(72 floor)





**OMTECH ELECTRICALS
SOLUTIONS PVT. LTD.**



Since inception, the company has
Successfully completed
10+ Million SQFT Electricals Projects





**OMTECH ELECTRICALS
SOLUTIONS PVT. LTD.**

www.oesplindia.com

Service

Our Service division provides a preventative and corrective managed maintenance 24/7, round the clock support to customers.

The maintenance team works closely with the projects team and gives continuous feedback which helps us to improve quality in other projects.

Our Team

We have an extremely cooperative project team to manage the project seamlessly dealing with different agencies on-site. We work as an integrated team to ensure project success.

Site Warrenty

Omtech offers one year on-site warranty assuring customers high quality deliverables and complete peace of mind. Our customers trust us with their high-end technological requirements and unique challenges.

Services

Electricals

All type of electrical work including licensing , supply , installation ,testing , commissioning of H.T. / L.T. Equipment , Interior electrification with under floor raceway , Lighting , Cable tray , Switch gear and cables and Distribution board.

HVAC

Centralise air condition system with Water chiller based , AHU Based, VRV System for electric efficiency . Ductable & Split A.C. System

Networking

All type of networking work including Active / Passive, Fibre optical, Server room setup with EPABX, Server /network Rack. WI-FI Set up

CCTV

All type of camera work with IP Based / Analog camera including safe data recording system

Plumbing work

We provide service for all of your plumbing needs. We serve residential and commercial customers as per their need .

Fire Alarm System and Sprinkler System

All type of fire detection system with Conventional, addressable detector . Gas suppression system, Fire extinguisher and wet sprinkler system

PA System

Public addressing system with Auto dialer to nearest fire brigade system

BMS

Integration of Electricals, HVAC, Fire Alarm, Access control, CCTV & PA system on one portal with Building management Software to Monitor & control all system with centralise to ensure that maximum energy savings & minimum down time of entire all connected system within premises

**Awarded with India's
Fastest Growing Company at IAC, Dubai.**





**OMTECH ELECTRICALS
SOLUTIONS PVT. LTD.**



Accenture

Completed project of more than
7 lakhs sqft at multiple location.
Pune, Hyderabad and Kolkata.



Advantage Omtech

Own Panel Manufacturing Unit

All India Network

Well-Managed

Reliable

Excellent Service

In House Design Team

Transparent

Maintenance Services

Straight Forward

Competitive with Pricing

High Quality Job

AN ISO 9001-2015 Certified Company



CUSTOMER FOCUS

Customer requirements and satisfaction forms the sum and substance of our existence. We have been serving the unique needs of our diverse customer base for over Twenty years and have earned the reputation of a trusted partner by leading organizations. Excellent quality, great service and partnering with customers to provide maintenance assistance at all times has been our foremost priority.

Our round-the-clock support to customers ensures faster resolution and assured reliability. Adding to this, our competitive and honest pricing has enabled us to retain our customers and win more. Most of them have been long standing partners who have also been recommending us to more customers.



**OMTECH ELECTRICALS
SOLUTIONS PVT. LTD.**

www.oesplindia.com

What makes us different from others...

Safe Environment

We continuously assess our employee's health and safety needs. Risk assessments are carried out operatives are inducted on each contract and are instructed to follow the health and safety requirements of site workers and our clients.

Our employees attend off-site training courses run by various governing bodies to ensure compliance.

Our entire team is covered with insurance and at site uses safety equipments and sage practices.

Principle Supplier Chain

With tie-ups with all leading brands for on-time and on-site delivery of material, we ensure best raw material quality and delivery. We consistently use materials tested and ISI certified. We also set up and on-site lab for testing raw materials on strength and other parameters meeting stringent time and quality requirements of customers.

Updated Technology

Use the latest and updated technology for design and installation. The Engineering division keeps abreast of latest technologies with new research and implementation.

"Coordination is Crucial, from the Conception of any Project Through its completion, While working Together with Clients, General Contractors, Architects, and Consultants"

In House Panel Manufacturing Unit CPRI Approved

Our manufacturing unit on name of **"Omtech Engineering"** is providing a wide range of Electrical Control Panels that are known for their impeccable quality & highly efficient production. We manufacture all below range as per requirement given by clients & design suitable as per site condition which is also cost effective & value engineering products by our in house team.

We are having in-house design team & our all ranges for panels are easy to maintain, Trouble free operation, user friendly, compact design, modular range, Long Life & it is almost approved by all major clients and consultants.

We also providing 24X7 call support on free of cost for all our products which are installed at all type of projects & different location from all over India.

- H.T & L.T. Control & Distribution Panel
- Lighting Distribution Boards
- Motor Control Panel
- Power Control Panel
- Feeder Pillar
- MCC Panel
- Bus-Ducts
- Starter Panels
- Load Sharing and Synchronizing Panels
- Auto Changeover Panels
- Automatic Power Factor Correction Panel
- Cable Tray & Trunking
- Junction Box for Network & Power Distribution
- Raceway in GI & MS Powder Coating
- Street Light Pole





**OMTECH ELECTRICALS
SOLUTIONS PVT. LTD.**

OUR PRESTIGIOUS CLIENTS

We have vast experience in executing all type of MEP projects in various sectors like IT Industries, Manufacturing Industries, Data centres, High end residential projects,

Corporate offices, educational Institutes, Entertainment , Healthcare, Hospitality and High end infra structure projects.

Software / IT Park

- CAPGEMINI TECHNOLOGIES SERVICES PVT
- ACCENTURE SERVICES PVT LTD
- BARCLAYS
- ROCHE
- JUNO MONETTA
- IBM
- DELL INTERNATIONAL
- BITWISE SOLUTIONS PVT LTD
- SQS INDIA INFOSYSTEM PVT LTD
- WNS
- ZENSAR TECHNOLOGIES
- 3DPLM SOFTWARE SOLUTION PVT LTD
- GEOMETRIC LTD
- WIPRO LTD
- THOUGHT WORKS TECHNOLOGIES LTD
- SOFOTEL INFRA PVT LTD
- I GATE PATNI
- SYNTEL PVT LTD
- CITIUS TECH
- AMDOCS
- INVENTURE KNOWLEDGE SOLUTIONS PVT LTD
- HCL TECHNOLOGIES
- SUTHERLAND
- MEDIAOCEAN
- SYNECHRON
- CERILLION
- L&T INFOTEACH
- SCHLUMBERGER
- CYBAGE SOFTWARE PVT LTD
- KATARIA
- MICROSOFT
- COGNIZANT
- CISCO
- TATA TECHNOLOGY
- TECH MAHINDRA
- FISERV
- HEXAWARE
- ECS INFOSOLUTIONS
- APTIFY
- UPS
- COMPUCOM
- CYBAGE
- V CUSTOMER



- SYNOPSIS
- LIGHT AND BULD TECHNOLOGY
- MAESTROS MEDILINE SYSTEM
- S1 SERVICES
- GIESECKE AND DEVRIENT
- AFFINITY EXPRESS
- SOFTBRIDGE
- SYSTEM PLUS
- TIETOENATOR
- EXFO
- TRINITY CONVERGENCE
- BRAINVISA
- MSC SOFTWARE
- NIEL SOFT
- NESS TECHNOLOGY
- QUINOX CONSULTANCY
- CEMOSOFT
- TRICOM
- E GAIN
- TATA CRL
- CYBAGE
- REDKNEE
- MISUMI
- FORTY FIVE INFRASTRUCTURE
- BROWSERSTACK SOFTWARE PVT LTD
- CROWDSTRIKE
- E SPACE
- GLOBAL STEP SERVICES PVT LTD
- ALLIANZ
- TOSHIBA
- GEP
- CROSS TAB
- Northern Trust Operating Services Pvt Ltd
- Nutanix
- SENIA
- SMART WORK
- TETRA PAK
- WNS
- ACCENTURE



DATA CENTER

- NET 4 INDIA LTD
- VODAFONE
- WIPRO
- SHIPPING CORPORATION OF INDIA
- D.B.POWER ELECTRONICS
- MAHINDRA AND MAHINDRA
- ADITYA BIRLA
- TATA AIG LIFE INSURANCE CO



- BPCL
- FORTY FIVE INFRASTRUCTURE
- IPR
- IDEA CELLULAR
- BHARTI AIRTEL
- BANK OF INDIA
- RAJASTHAN STATE





**OMTECH ELECTRICALS
SOLUTIONS PVT. LTD.**

www.oesplindia.com

ARCHITECT

- SPACEMATRIX DESIGN CONSULTANTS PVT LTD
- INTERICS INTERIOR MANAGEMENT PVT LTD
- KRITICON LTD
- DELTA INTERIOR
- CORE PROJECTS
- GENESIS INSCAPES PVT LTD
- QUADRA INTERSOL PVT LTD
- RASCON BUILDING SOLUTIONS PVT LTD
- DWP INTERIX
- TALATHI ARCHITECT
- DSP ARCHITECT
- ETHIQUE
- CORE GROUP ARCHITECT
- PLUMB DESIGN
- CRN
- DESIGN CUBE
- CONCORD ARCHITECT
- SAPPHIRE STUDEO
- SPATIAL DIMENSION
- SONATA DESIGN SYSTEM



- SVN ASSOCIATES
- BSB DESIGN
- ART D SPACE
- DESIGNER GROUP
- M CUBE ARCHITECT
- UDAY JOSHI AND ASSOCIATES
- AMBEKAR AND ASSOCIATES
- TUSHAR PARIKH AND ASSOCIATES
- PROTECH ARCHITECT
- ARCH INTERSOL INDIA
- I DREAM
- OPPOLIS
- ARCHITECT RUSHIKESH
- PARTHENON ARCHITECT
- KAISMA AND ASSOCIATES
- DIMENTION INTERIOR
- KRAFT DESIGN SOLUTIONS
- SONATA DESIGN SYSTEM
- OPPOLIS
- SUDHAKAR PAI & ASSOCIATES

INDUSTRIAL

- TATA TECHNOLOGIES LTD
- FORCE MOTOR
- HODEK VIBRATION TECHNOLOGIES PVT LTD
- MAHINDRA AND MAHINDRA
- PHOTON MOTOR
- MAHINDRA CONVEYOR
- FORCE MOTOR
- CROMPTON GREAVES
- COTTON GREAVES
- CECO TOOLS
- PLAZMA TOOLS
- ME ENERGY PVT LTD
- ASIA MOTOR WORK
- TATA MOTORS
- BAJAJ
- AUTOMAG INDIA PVT LTD
- RATHI LIGHTINING
- SCHNEIDER
- CARGIL

- GODREJ
- CARRARO
- GLV
- GROUPO ANTELINO
- HONDA MOTORS
- KIRLOSKAR
- TRANTER
- NESTLE PRODUCTS
- HENKAL
- AIR PRODUCTS
- EATON ENGINEERING
- TATA RAYSON
- HUMISEAL
- IKEA India Private Limited,
- MEGNA
- TATA HITACHI
- THYSENKRUPP



BANKING & FINANCE

- MAHINDRA AND MAHINDRA
- BARCLAYS FINANCE
- IDBI FINANCE
- SARASWAT BANK
- RATNAKAR BANK
- CENTRAL BANK OF INDIA
- BAJAJ FINANCE
- TATA AIG LIFE INSURANCE
- AXIS BANK



- BIRLA SUNLIFE INSURANCE
- ICICI BANK
- INDIA INFOLINE
- BARCLAYS BANK
- SALGAONKAR GOA
- WESTERN UNIAN
- SAP SYSTEM
- SUBHKAM VENTURE





**OMTECH ELECTRICALS
SOLUTIONS PVT. LTD.**

www.oesplindia.com

CONSULTANT

- RELYS CONSULTANT
- CUTECH CONSULTANT
- PAL DESIGN
- ABHIYANTA CONSULTANT
- NET DESIGNER
- WIPRO
- TRIMAX
- TRINITY
- ELECTRO CONSULTANT
- KBARTECH



- CMC LIMITED
- BINDU BHATT AND ASSOCIATES
- BANK OF INDIA
- INSTITUTE FOR PLASMA RESEARCH
- A SQUARE CONSULTANT
- SWAMI CONSULTANT
- E SOLUTIONS
- UB TEACH
- MEP TEACH

INSTITUTIONAL/MALL/ CORPORATE OFFICE

- PIRAMAL ENTERPRISES
- CENTIUM
- QUEST PARTNER
- SVKM
- IITM
- BRITISH COUNCIL
- US VISA CENTER
- SHOPPERS STOP
- PRL AGASTYA PVT LTD
- NATIONAL STOCK EXCHANGE OF INDIA LTD

- SCHNEIDER
- MITSUBISHI
- PRIDE PURPLE PROPERTY
- KELLOGGS
- ROLLS ROYCE
- MALPANI GROUP
- PARAKH AGRO
- K RAHEJA PVT LTD



ENTERTAINMENT

- CINEPOLIS
- CAFÉ ROYAL
- CAFÉ COFFEE DAY



- JUMP GAME
- REPUBLIC TV
- COORLA FOOD MALL

HEALTH & HOSPITAL

- ABBOTT HEALTHCARE
- KKI
- SANCHETI HOSPITAL
- GOLD GYM

- ABBS GYM
- OHUM HEALTH CARE SOLUTIONS PVT LTD
- V LIFE



INFRASTRUCTURE PROJECT

- PIRAMAL ESTATES PVT LTD
- K RAHEJA PVT LTD
- SERENE PROPERTIES
- ADANI GROUP
- THYSSENKRUPP SERVICES
- KUMAR BUILDERS
- CYBAGE
- ISKCON



- PRIDE DEVELOPERS
- K RAHEJA CORPORATION
- KOLTE PATIL DEVELOPERS
- ADITYA DEVELOPERS
- MURMUGAO PORT TRUST
- NV REALTY

PMC

- CBRE SOUTH ASIA PVT LTD
- JONES LANG LASALLE
- CUSHMAN & WEIKFIELD INDIA PVT LTD
- KNIGHT FRANK INDIA PVT LTD
- AMS PROJECT CONSULTANT
- COLLIERS INTERNATIONAL SERVICES PVT LTD
- Vestian Global Workplace Services Pvt Ltd

AIRPORTS


- GUWAHATI INTERNATIONAL AIRPORT






**OMTECH ELECTRICALS
SOLUTIONS PVT. LTD.**

Awards & Certificates



CERTIFICATE OF REGISTRATION



PYRAMID

Omtech Electricals Solutions Pvt. Ltd.

Delite Square, Office No. 201, 2nd Floor, Opp. ICICI Bank,
Sahakar Nagar, Pune - 411009, Maharashtra, INDIA




This is to certify that the Environmental Management System of
above organisation has been assessed and registered by
Pyramid Certifications LLP against the scope of supply and provision of

ISO 14001:2015

SCOPE : Turnkey Solutions for Interior, Electrical, Networking, BMS, HVAC,
Fire Alarm, CCTV, Access Control, PA System, Sprinkler and Plumbing
Services for Various Sectors Like IT Companies, Banks & Financial
Sector, Manufacturing Industries, Data Centres, Educational
Institutions, Healthcare, Hospitality, Greenfield Projects, Residential,
Entertainment and Infrastructure Projects. Design, Build and
Maintenance Activities.

CERTIFICATE NO : JEA158924E
INITIAL CERTIFICATE DATE : 10.10.2024
CERTIFICATE DATE : 10.10.2024
VALID UNTIL : 09.10.2027

1ST SURVEILLANCE DATE : 09.09.2025
2ND SURVEILLANCE DATE : 09.09.2026






DIRECTOR


This certificate is the property of Pyramid Certifications LLP and remains valid subject to satisfactory surveillance audits.
For verification & updated information concerning the present certificate visit :
www.pyramidcertifications.com

PYRAMID CERTIFICATIONS LLP
401, Ghanashyam Enclave, Mumbai 67, INDIA
www.pyramidcertifications.com

PCL/COC/Rev.01



CERTIFICATE OF REGISTRATION



PYRAMID

Omtech Electricals Solutions Pvt. Ltd.

Delite Square, Office No. 201, 2nd Floor, Opp. ICICI Bank,
Sahakar Nagar, Pune - 411009, Maharashtra, INDIA




This is to certify that the Occupational Health and Safety Management System
of above organisation has been assessed and registered by
Pyramid Certifications LLP against the scope of supply and provision of

ISO 45001:2018

SCOPE : Turnkey Solutions for Interior, Electrical, Networking, BMS, HVAC,
Fire Alarm, CCTV, Access Control, PA System, Sprinkler and Plumbing
Services for Various Sectors Like IT Companies, Banks & Financial
Sector, Manufacturing Industries, Data Centres, Educational
Institutions, Healthcare, Hospitality, Greenfield Projects, Residential,
Entertainment and Infrastructure Projects. Design, Build and
Maintenance Activities.

CERTIFICATE NO : JEA159024O
INITIAL CERTIFICATE DATE : 10.10.2024
CERTIFICATE DATE : 10.10.2024
VALID UNTIL : 09.10.2027

1ST SURVEILLANCE DATE : 09.09.2025
2ND SURVEILLANCE DATE : 09.09.2026

DIRECTOR

This certificate is the property of Pyramid Certifications LLP and remains valid subject to satisfactory surveillance audits.
For verification & updated information concerning the present certificate visit :
www.pyramidcertifications.com

PYRAMID CERTIFICATIONS LLP
401, Ghanashyam Enclave, Mumbai 67, INDIA
www.pyramidcertifications.com

PCL/COC/Rev.01



Quest

BRITISH COUNCIL



NSE



CENTUM CONSULTING

Kellogg's



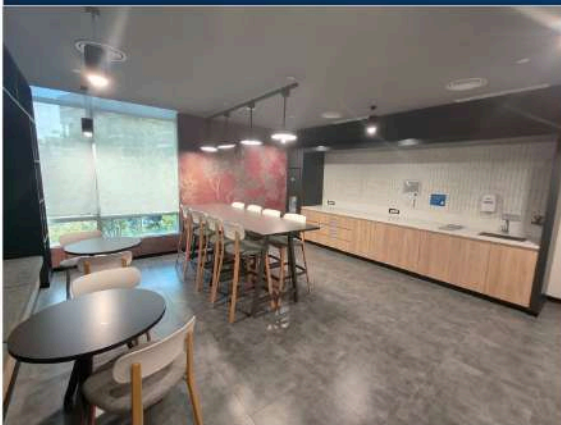
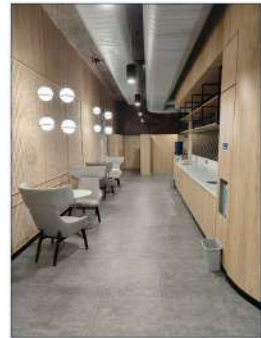
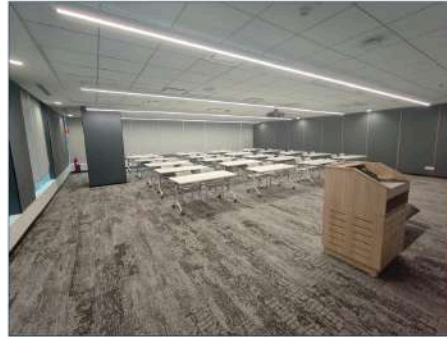
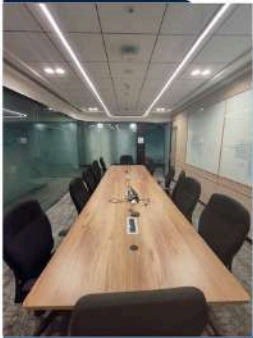
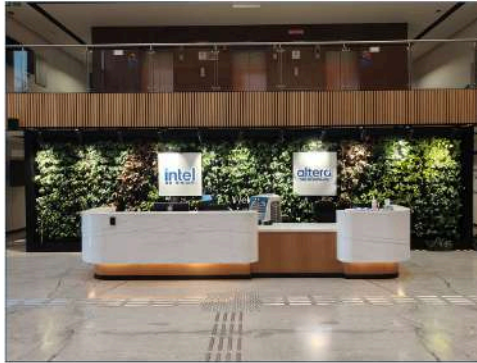
SHOPPERS STOP

Cinépolis



**OMTECH ELECTRICALS
SOLUTIONS PVT. LTD.**

Site Photos



Qvest

BRITISH COUNCIL



NSE



CENTUM CONSULTING

Kellogg's



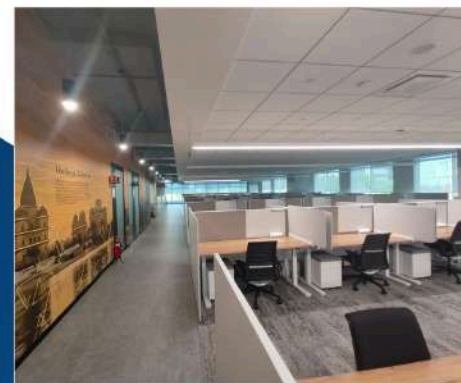
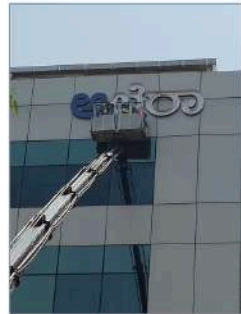
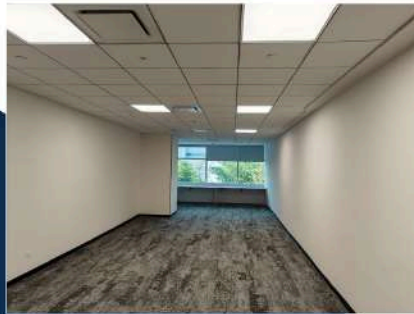
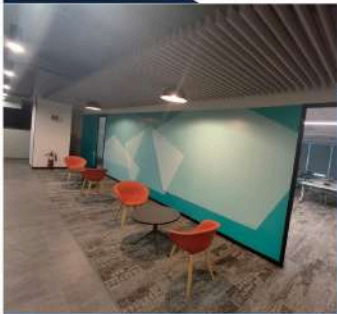
SHOPPERS STOP
START SOMETHING NEW

Cinépolis



**OMTECH ELECTRICALS
SOLUTIONS PVT. LTD.**

Site Photos



Qwest

BRITISH COUNCIL



NSE



CENTUM CONSULTING

Kellogg's



SHOPPERS STOP
START SOMETHING NEW

Cinépolis

Community Engagement

Considering our social responsibility we endeavour to give back to the society by our efforts in uplifting of rural poor, marginalized, disadvantaged and deprived communities by developing skills within them and giving them a means to employment. We constantly upgrade and educate our teams to ensure environmental sustainability as well. Omtech extends financial support for rewarding bright student for their educational needs through various NGOs. We are committed to provide financial help to underprivileged children in various sports. Omtech provides regular financial help to NGOs for shelter of stray Animal

Promoting Education

Omtech Extend support for awarding bright student in various function of social and providing need-full for their education .

Protection of Animal, Environment Sustainability

Omtech providing regular financial help for shelter of Animals. Also working together with NGO for any further need.

Promoting Sports

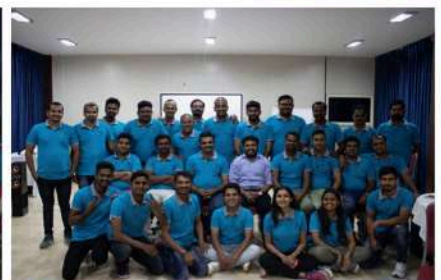
Omtech committed to provide financial help for athletes to encourage sports through promoting them for various sport activity with required sporting spirits .

Swachh Bharat Abhiyan

Omtech Inspired by our Great Leader & Prime Minister Narendrabhai Modi to keep clean our country . We contribute to clean & neat our work environment as well as surrounding site area . Also become helping hand to motivate community to keep nation clean .

To become respected organisation in field of project with our team & providing transparent business solution where our Client also enjoy to work with us .

Our Events



HEAD OFFICE

PUNE

BRANCH OFFICES

MUMBAI

BANGALORE

HYDERABAD

AHMEDABAD

Omtech Electricals Solutions Private Limited.

Office No-201, Delite Square, 4th Floor, Near Aranyeshwar Temple, Opp - ICICI Bank, Sahakar Nagar, Pune - 411009

Bangalore office address: Omtech Electrical Solutions Pvt Ltd, 1st Cross, Chinnapanahalli Road, Near Mariyamma Temple, Whitefield, Bangalore- 560037

☎ 020-24212796, 020-24214796 , 020-24217796

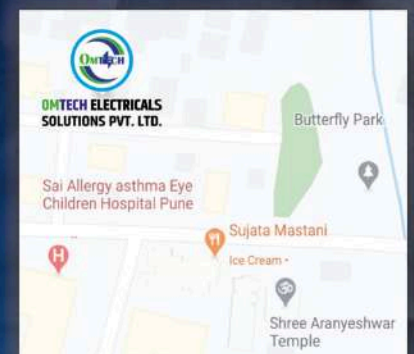
✉ admin@oesplindia.com 🌐 www.oesplindia.com

Follow us on

in <https://www.linkedin.com/in/omtech-electricals-solutions-private-limited-929244187/>

f <https://www.facebook.com/Oesplindiapune-2462936393756972/>

🐦 <https://twitter.com/oesplindia>



Quest

BRITISH COUNCIL



NSE

PRIDE PURPLE

CENTUM CONSULTING

Kellogg's

PARAKH AGRO

SHOPPERS STOP

Cinépolis



Abbott



sancheti



adani

Piramal Realty



Kumar Builders

CBRE